

1. In your own words, briefly describe the respiratory system.

2. Name the five basic functions of the respiratory system.

3. The respiratory system has two components. Name each component and state the structures of the respiratory system that each component contains.

4. How many lungs are present in the human body? How can you distinguish between them (physical characteristics)?

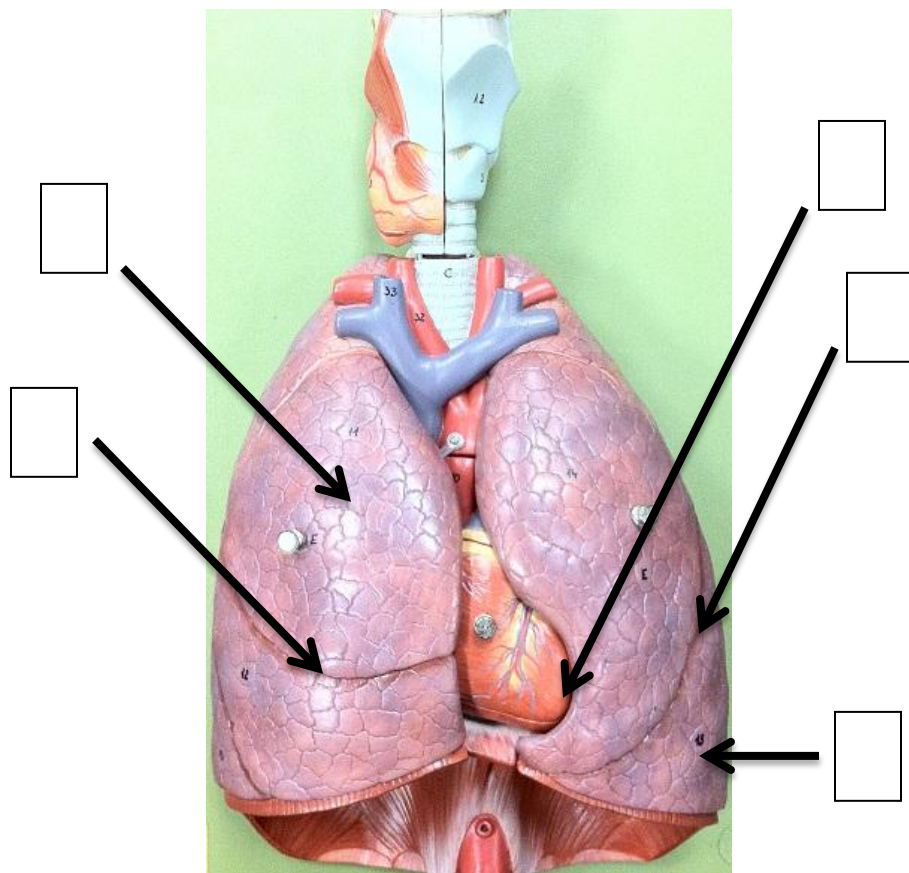
5. What is the function of cilia in the trachea?

6. Name the three parts of the pharynx.

7. Where does gas exchange occur?

8. Trace the passageway of air from the external nares to the alveoli.

9. Label the diagram.



TERMS

- A. Right lung
- B. Left lung
- C. Oblique fissure
- D. Horizontal fissure
- E. Cardiac notch

10. Define lung compliance.

11. The instrument that is used to help physicians diagnose problems with pulmonary ventilation is called a _____.

12. Oxygen is mostly transported in the body bound to hemoglobin. Name the three ways that carbon dioxide can be transported in the body.

13. Define asthma.
